

# DRAWING ISO 205 REV. "AB"

**TABLE I – DIMENSIONS**

SHELL SIZE	A (MAX)	B	C	△ "S" ONLY	
				MAX ENTRY STYLE E & T	MAX ENTRY STYLE S & H
1	1.25	.53	.984	03	04
2	1.58	.53	1.312	33	04
3	2.13	.53	1.852	33	04
4	2.77	.53	2.500	33	04
5	2.68	.66	2.406	04	04
6	2.77	.73	2.500	05	05

- △ DIMENSION APPLIES TO TOP ENTRY ONLY
- △ DIMENSION APPLIES TO S & H ENTRY ONLY
- △ CABLE ENTRY VALUES EXCEEDING MAX ENTRIES APPLIES TO E, T & S ENTRY ONLY (CONSULT MFR FOR "H" ENTRIES)

**TABLE II – CABLE ENTRY DIMENSIONS**

ENTRY SIZE	D	E	F	L	K	V	U	S
31	.188	1.22	1.00	.512	.312	.250	.125	(1) .170 Ø
02	.250	1.28	1.00	.575	.375	.250	.125	(1) .170 Ø
32	.312	1.34	1.00	.638	.438	.281	.155	(1) .170 Ø
03	.375	1.40	1.00	.700	.500	.310	.155	(2) .250
33	.438	1.43	1.00	.762	.562	.310	.155	(2) .250
04*	.500	1.50	1.00	.825	.625	.375	.219	(2) .250
05*	.562	1.62	1.00	.888	.688	.375	.219	(2) .500

\* CONSULT FACTORY FOR OPTIONAL CAN HEIGHTS

**TABLE III – MATERIAL FINISH**

SYM	FINISH DESCRIPTION
B	CADMIUM PLATE/OLIVE DRAB
M	ELECTROLESS NICKEL
N	CADMIUM PLATE/OLIVE DRAB OVER NICKEL PLATE
NF	CAD/OLIVE DRAB OVER ELECTROLESS NICKEL (500 HOUR SALT SPRAY)
T	CADMIUM PLATE/BRIGHT DIP OVER NICKEL

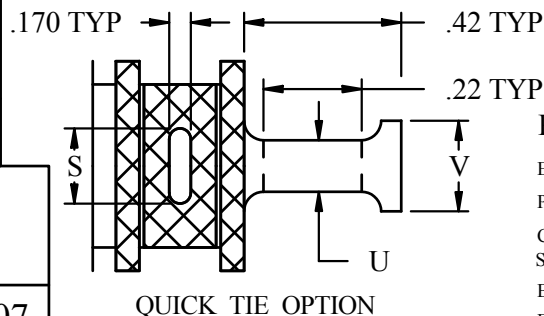
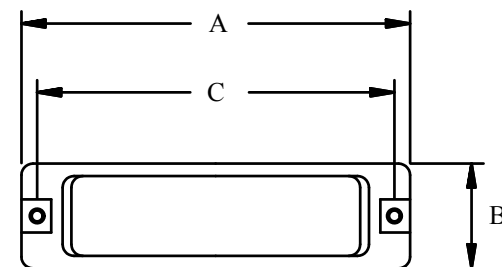
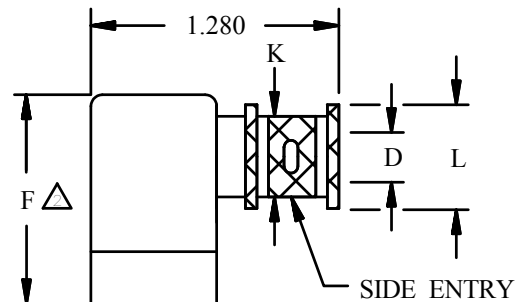
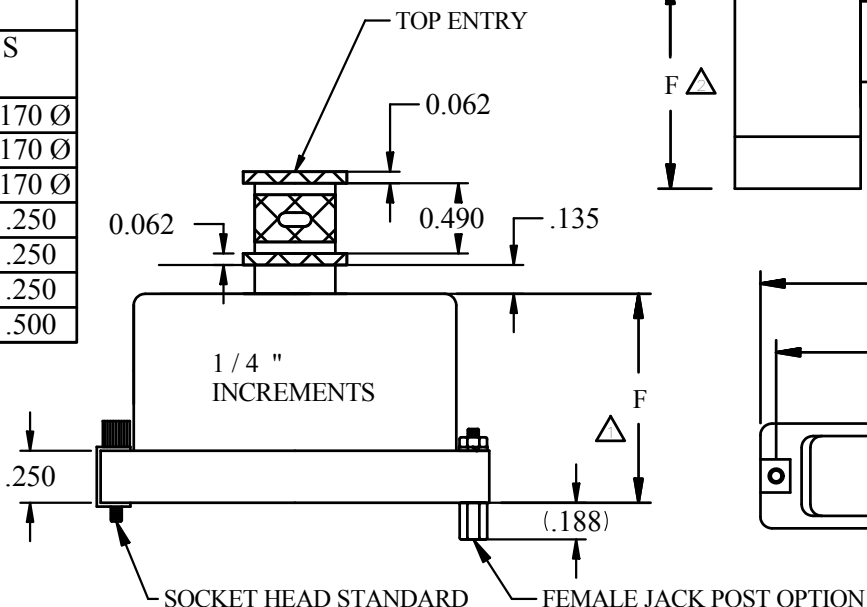
ISODYNE INC

7706 E. OSIE – WICHITA, KS. 67207

U.S. PATENT # 5,769,665

CAGE CODE # 031M6

D SUB BACKSHELL, EMI / RFI  
SPRING BAND



QUICK TIE OPTION

TOLERANCE: {Unless otherwise noted}  
2 PLACE DEC ± .030  
3 PLACE DEC ± .015  
ANGULAR ± 2°

**PART NUMBER BREAKOUT FOR D-SUBMINIATURE**

EXAMPLE: ISO S 205 NF 1 02 B K -5 S -X

- PRODUCT SERIES — ISO
- CABLE ENTRY STYLE — S=SIDE T=TOP E=END H=45°
- BASIC PART NUMBER — 205
- FINISH SYMBOL, TABLE III — NF
- SHELL SIZE, TABLE I — 1
- CABLE ENTRY DESIGNATOR, TABLE II — 02
- B K
- -5
- S -X

△ CABLE ENTRY VALUES EXCEEDING MAX ENTRIES (OMIT IF NOT REQUIRED)

— SLOT

— HEIGHT OF BACKSHELL \*\* (1/4 INCR)

— QUICK TIE LEG (OMIT IF NOT REQUIRED)

— \*\*\*SCREW STYLE (OMIT IF SOCKET HEAD)

B = MALE SCREW W/CLIP  
H = HEX HEAD W/CLIP  
S = THUMB SCREW W/CLIP  
F = FEMALE JACK POST W/LOCK WASHER & NUT, THREADED LENGTH (.450) INCHES  
F2= FEMALE JACK POST  
\*\*\*THREADED LENGTH (.625) INCHES

\*\* MIN HEIGHT AS ILLUSTRATED AND F DIMENSION OMIT DASH NUMBER FOR MIN IN COLUMN F TABLE II

\*\*\* HARDWARE SET SHALL INCLUDE 2 EA JACK POST, 2 EA LOCK WASHER, 2 EA NUT, 4 EA FLAT WASHER. USE AS NEEDED.

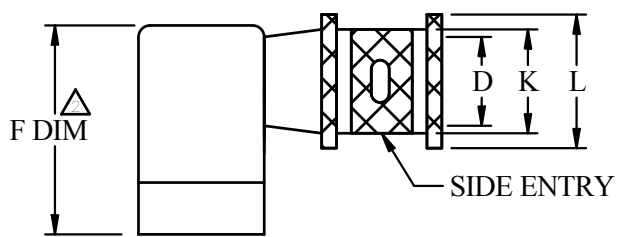
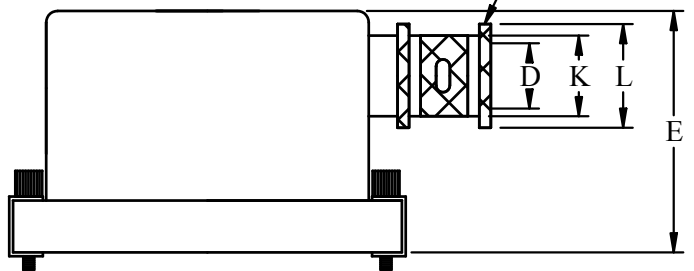
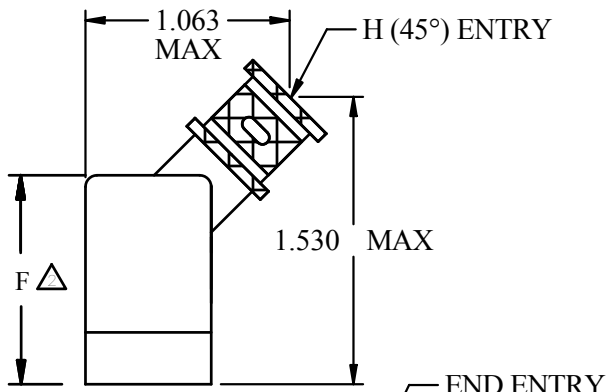
\*\*\* ALL HARDWARE MATERIAL/FINISH SHALL BE - SST/PASSIVATED.

ALL BACKSHELLS INCLUDE SPRING

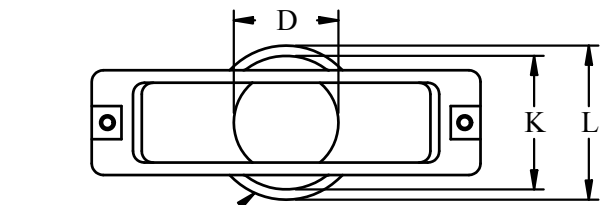
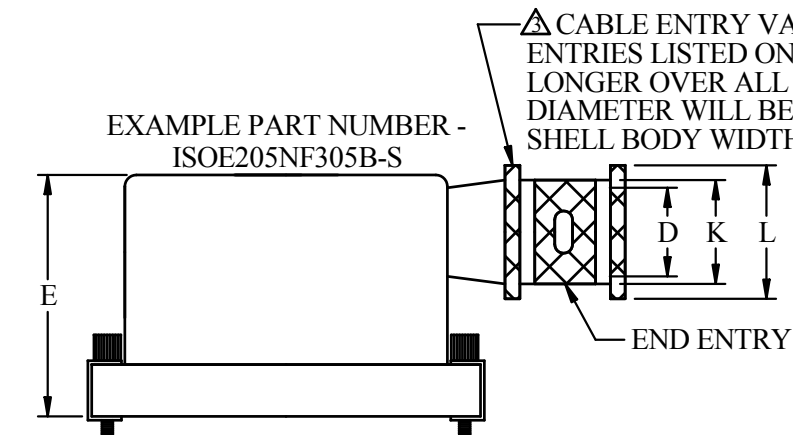
# DRAWING ISO 205 REV. "AB"

\* CONSULT FACTORY FOR OPTIONAL CAN HEIGHTS

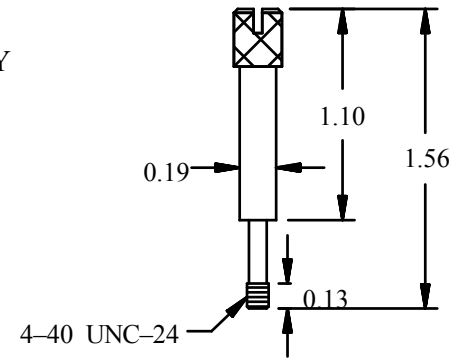
ENTRY SIZE	D	E	L	K	- # *
31	.188	1.22	.512	.312	- 5
02	.250	1.28	.575	.375	- 5
32	.312	1.34	.638	.438	- 5
03	.375	1.40	.700	.500	- 5
33	.438	1.43	.762	.562	- 5
04*	.500	1.50	.825	.625	- 5
05*	.562	1.62	.888	.688	- 5



EXAMPLE PART NUMBER - ISOS205NF305B-S

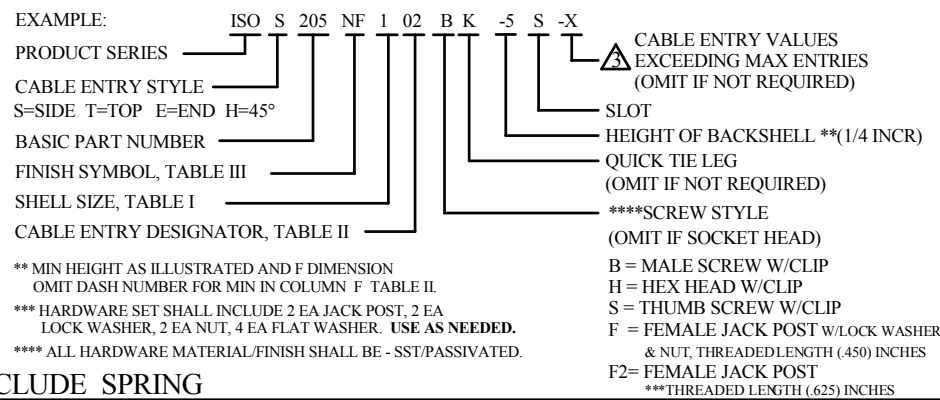


TOP ENTRY EXAMPLE PART NUMBER - ISOT205NF305B-S



THUMB SCREW

### PART NUMBER BREAKOUT FOR D-SUBMINIATURE



**ISODYNE INC**

7706 E. OSIE - WICHITA, KS. 67207  
 U.S. PATENT # 5,769,665  
 CAGE CODE # 031M6

TOLERANCE: {Unless otherwise noted}  
 2 PLACE DEC ± .030  
 3 PLACE DEC ± .015  
 ANGULAR ± 2°

ALL BACKSHELLS INCLUDE SPRING

D SUB BACKSHELL, EMI / RFI  
 SPRING BAND